

asdCapital

Autism New Zealand Inc—Wellington Branch E News May 2010

What's On

For more information regarding the following groups please contact the branch. wellington@autismnz.org.nz or 472 1007.

OASIS Partner Group— A confidential, welcoming, and supportive environment for people who have a partner with ASD.

Family Group—Kapiti Coast— 2nd Wednesday of the month during the School Term at "Westwing" Raumati Beach School Raumati Road, Raumati Beach from 7.30pm.

Family Group—Hutt Valley— Big monthly meeting of (mostly) parents with a child on the spectrum with wish to positively engage in the quality sharing of strategies, knowledge and understanding. This independent group meets at the Knox Church Lounge, 574 High Street Lower Hutt.

Adult Group—Wellington For ages 16+ on the ASD Spectrum and their partner/parent/caregiver/support person. The group meets monthly.

Children's Social Group— Meets weekly during the School Term.

Monthly Committee Meeting

3rd Wednesday of the month. Please contact the branch for further details.

Asperger Coffee Group— Meet for a Coffee and a Chat to discuss Childhood and Asperger's Syndrome. Meets Monthly Tawa Community Centre.

Support Group—Wairarapa Please contact the Branch for details.

Learn to Swimming Program for Children—

The ultimate aim of this programme is to provide to parents and caregivers with a affordable way to introduce their child to swimming and build confidence in this area. These lessons are one on one and normally run from your local swimming depending spaces available,



Would you like this newsletter emailed to you?
Contact us at wellington@autismnz.org.nz and request to be added to our E-News database.

IF YOU NO LONGER WISH TO RECEIVE EMAILS FROM US THEN PLEASE REPLY UNSUBSCRIBE

Branch: Grd Floor Molesworth House 101 Molesworth Street Wellington, PO Box 12 599 Thorndon 6144,
Ph: 04 472 1007 Fax: 04 470 7617
Email: wellington@autismnz.org.nz
Free phone: 0800 Autism (288 476)

Parent to Parent Wellington Region

Kapiti - Parent Support Group—Your invited to join us for coffee & chat.

10am to 12 noon - Monday or Thursday Monthly,
Please contact Parent to Parent for dates.

At Kapiti Community Centre, 15 Ngahina Street, Paraparaumu

Lower Hutt - Parent Support Group—Your invited to join us for coffee & chat on the Last Tuesday of every month 10am to 12 noon.

Please contact Parent to Parent for dates.

Drop in for as long or as short a time that suits you. Come & meet other parents of children with different abilities. Come & ask your questions, on issues your struggling with. Children welcome. At Parent To Parent Unit 3 / 28 Bridge Street, Lower Hutt. Off Aglionby, Marsden Street or Pharazyn Street, Fire Station is on the Corner of Bridge Street and Marsden Street we are down the drive way to the Fire Station entrance but please don't park at the fire station parking area. You can park at the Hutt City Church, 22 Marsden Street if there is no street parking.

Telephone: 04 569 9398 email: wellington@parent2parent.org.nz

Children's Social Group

Back by popular demand we are running the Children's Social Group for ages 7-13 years.

Day: Weekly on a Thursday during Term 2 2010

Time: 4.30pm to 6.00pm

Location: Johnsonville Community Centre, Johnsonville, Wellington

The group is informal and we promote free play, once your child is engaged in an activity the team will help foster social communication and guidance.

For more information contact the branch 472 1007 or wellington@autismnz.org.nz

SIMOANA'S SURFCOACHING

presents A FREE SPECIAL NEEDS SURFING EXPERIENCE IN WELLINGTON

A fun recreational experience for the family (with an autistic child) to enjoy together I have over 35 years surfing experience and am certified by International Surfing Assn (ISA) & Surfing NZ. I have also completed a Surf Life Saving and current First Aid certification. I am also a member Disabled Surfing NZ.

Parents/care givers will be fully responsible for their children and be expected to be involved and assist in the water with the surfing experience.

www.surfcoachingwellington.co.nz/special-needs.html

(Koha or donation for running costs, gear and caregivers appreciated)

Additional helpers on the day to get children into wetsuits/life jackets are appreciated. Any donation of old surfboards/wetsuits or lifejackets also appreciated.

Contact - Simon Parkin Ph: 04: 383 6670 M: 027 2402059

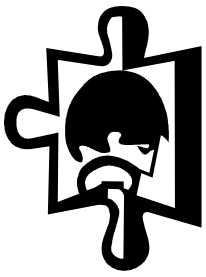
Tandem board and life jackets kindly sponsored by Wellington Airport "Wild at Heart" Warm quality wetsuits kindly sponsored by the Island Bay Lions.

RIMUTAKA GYMSPORTS ADAPTED CLASSES For People with a Disability or Special Needs Rimutaka Gymsports are running adapted gym classes for people with a disability or special need. This is an opportunity to help develop movement skills and have fun in a supported and adapted environment Classes run for up to 1 hour Cost: \$5 per session Times: Monday 3.30pm – Any Age Saturday 12.15pm – Any Age Phone: 526 2990 Email: rimumaka.gym@xtra.co.nz Address: 55 Montgomery Crescent

PARENT to PARENT
NEW ZEALAND



"Empowering parents, caregivers and siblings who have children and family members with disabilities, health impairments or special needs through support and the provision of information"



asdCapital

Autism New Zealand Inc—Wellington Branch E News May 2010

Homeschooling ASD Children Support Group



Art Therapist—Serena Stace

- Art therapy is a type of psychotherapy or counselling.
- Art therapy helps children and young people with a number of different issues including life changes, trauma, illness and disability.
- Making art allows children to process feelings and worries that they have trouble talking about.
- Interaction with pastels, paint and clay provides important sensory and motor development which helps children's physical and emotional development.

Research shows that art therapy is useful for children with Autism Spectrum Disorders and AD/HD. For further information please contact the branch on 04 478 2700 or wellington@autismnz.org.nz

We are two local families homeschooling children on the autism spectrum.

We are keen to get in touch with other parents in the Wellington Region who are, or are thinking of, homeschooling their ASD children).

We'd like to set up a support group for those on this journey so we can share such things as what is working and resource ideas. We appreciate, like all children, each ASD child is unique and every family will have their own way of meeting their child's learning needs.

At this stage we think it would be great to have the opportunity to meet informally once a month as parents. We could also look at the possibility of having a regular get together for the children of the involved families.

If you are interested in knowing more and/or getting involved, please email the branch for further information.

EarlyBird

The NAS EarlyBird® Programme (NAS National Autistic Society, UK) is for families of pre-schooler's (under 5 years) to support parents between diagnosis and school placement. This programme will empower parents and help them facilitate their child's social communication and appropriate behaviour within the child's natural environment.

Contact Pat at National Office if further details, by calling 04 470 7616 or emailing pat.gluck@autismnz.org.nz

SUPPORT OUR FUNDRAISING –Go to www.yourfastshop.co.nz/autismnzwgtn and browse over 85 online stores.

All shopping helps raise funds the Wellington Branch of Autism New Zealand. Save money and time by shopping online.

S.P.E.L.L. Training

Please contact National Office for further information. Phone: 0800 AUTISM (288 476)

Overview

SPELL is a framework developed by the National Autistic Society, UK. It underpins all areas of work, and provides a strong basis for good practice, and a shorthand tool for problem solving. It is set within the context of each person having an individual plan designed to meet their specific needs and interests.

Autism New Zealand 2010 Conference

**Celebrating Autism in New Zealand:
Best living through informed practice**

Te Papa in Wellington on Sept 10 – 12, 2010.

Keynote speakers already confirmed are:

- Dr Gary Mesibov
- Professor Tony Attwood
- Donna Williams
- Dr Ava Ruth Baker

For more information go to www.autismnz.org.nz, email conference@autismnz.org.nz or phone 04 470 7616 (0800 288 476).

Branch: Grd Floor Molesworth House 101 Molesworth Street Wellington, PO Box 12 599 Thorndon 6144,
Ph: 04 472 1007 Fax: 04 470 7617
Email: wellington@autismnz.org.nz
Free phone: 0800 Autism (288 476)

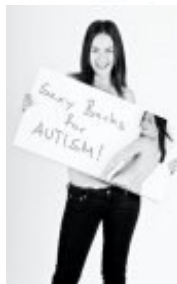


Slingshot is 'Raising the Flag' for Autism NZ

Raising the Flag empowers Slingshot customers to choose to have a portion of their monthly bill donated to an Autism NZ Branch. Then each month Slingshot will send us a cheque to help those affected by an Autism Spectrum Disorder.

To join up with Slingshot internet and tolls visit www.slingshot.co.nz/autismnz or phone 0800 89 2000.

If you are already a Slingshot customer then just advise them that you would like to be part of this programme and they can link your account.



Sexy Backs for Autism Calendar

Sexy Backs is a photographic project to help raise awareness of Autism Spectrum Disorders.

The concept for "Sexy Backs" is to produce simple Black & White portraits, showing naked backs, something we all have, something that is cheeky, fun, and where sex, age, race, or autism was irrelevant. Contact the branch to place your order. wellington@autismnz.org.nz

An exciting opportunity for Wellington/Hutt/Porirua Families.

If you have an interest in Relationship Development Intervention (RDI®) then this is an opportunity not to be missed.

RDI® is an intervention for individuals on the autism spectrum that targets social interaction and dynamic thinking skills. It is a home based, parent-led program in which parents are taught how to re-establish the guided participation relationship with their child.

Laura Southward-Ellis (RDI® Consultant in Training) is offering the opportunity for families to work with her to deliver RDI® to their child. This is an exciting dynamic treatment approach for families who have a child on the autistic spectrum.

To learn more about RDI® visit the RDI® website:

www.rdiconnect.com

To register interest with Laura, or to get more details:

phone: 04 5654419 or 027 5651265 Email: getset2go@getset2go.co.nz

